

**STANDARD
DEPARTURE
CHART - INSTRUMENT**

TRANSITION ALT	14 000
TRANSITION LVL	FL 140

GUNSAN DEP	124.1
	293.525
GUNSAN TWR	126.5
	292.3

GUNSAN (RKJK)
RWY 18/36
LINTA 1

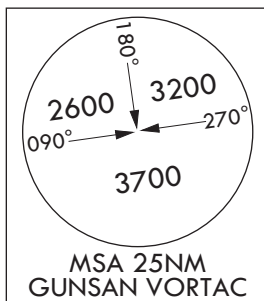
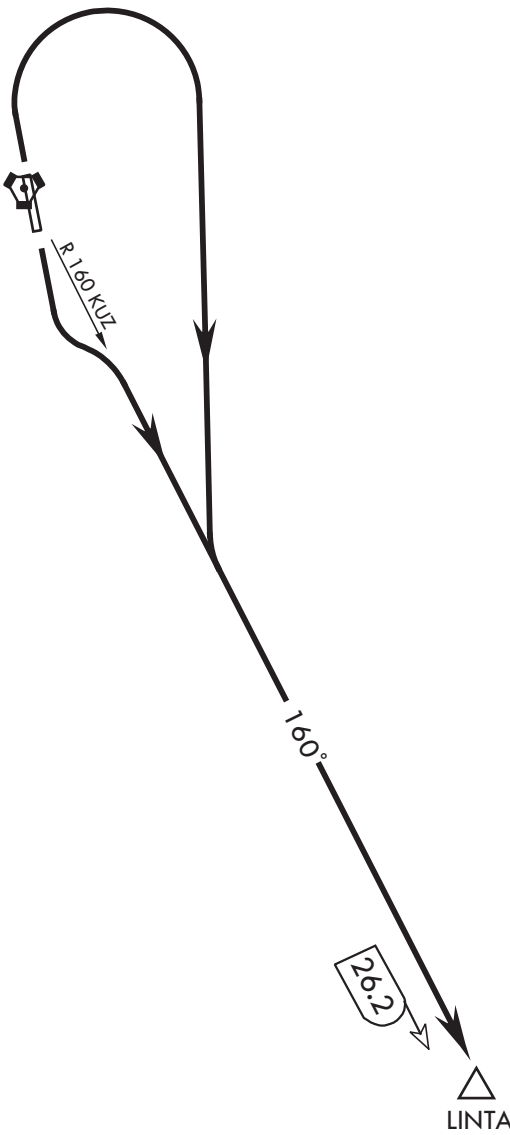
Note : Departure under U.S. TERPS.

ELEV, ALT IN FEET
DIST IN NM
BRG ARE MAG
VAR 8° W

True North ↑

GUNSAN	
VORTAC	112.8
KUZ	≡≡≡--
CH	75

500



NOT TO SCALE

2508

DEPARTURE ROUTE DESCRIPTION

TAKE-OFF RWY 18 :

Turn left to intercept the R 160 KUZ direct LINTA(R 160 KUZ/D26.2).
Maintain ATC assigned altitude.

TAKE-OFF RWY 36 :

Climb to 500 on R 360 KUZ, then climbing right turn to intercept the R 160 KUZ direct LINTA(R 160 KUZ/D26.2). Maintain ATC assigned altitude.

Change : MAG VAR.

INTENTIONALLY

LEFT

BLANK

**STANDARD
DEPARTURE
CHART - INSTRUMENT**

TRANSITION ALT	14 000
TRANSITION LVL	FL 140

GUNSAN DEP	124.1
GUNSAN TWR	293.525
	126.5
	292.3

GUNSAN (RKJK)
RWY 18/36
ENTEL 1

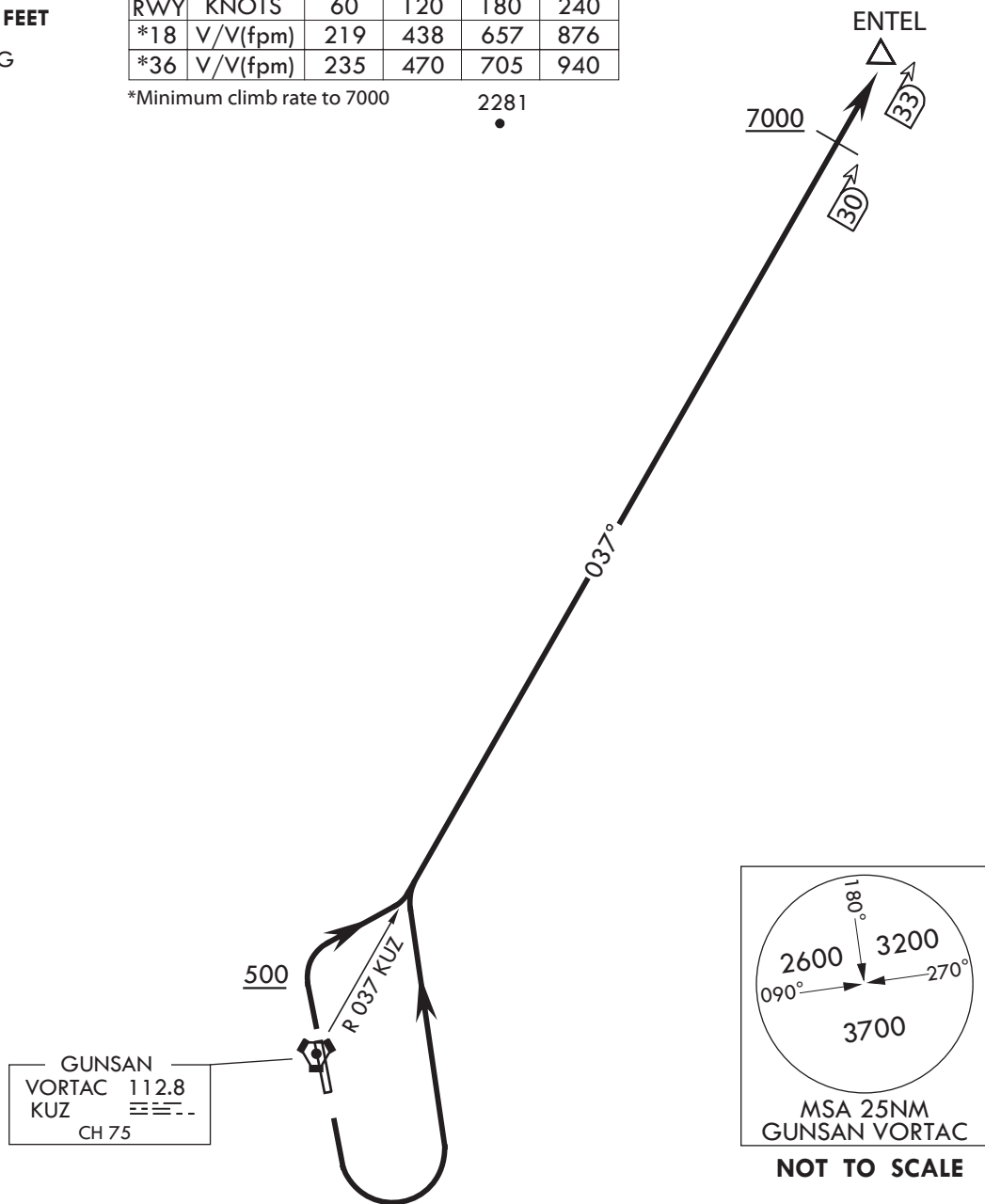
Note : Departure under U.S. TERPS.

ELEV, ALT IN FEET
DIST IN NM
BRG ARE MAG
VAR 8° W

RWY	KNOTS	60	120	180	240
*18	V/V(fpm)	219	438	657	876
*36	V/V(fpm)	235	470	705	940

*Minimum climb rate to 7000 2281

True North ↑



DEPARTURE ROUTE DESCRIPTION

TAKE-OFF RWY 18 :

Turn left to intercept the R 037 KUZ direct ENTEL. Cross KUZ 30 DME at or above 7 000. Maintain ATC assigned altitude.

TAKE-OFF RWY 36 :

Climb to 500, then climbing right turn to intercept the R 037 KUZ direct ENTEL. Cross KUZ 30 DME at or above 7 000. Maintain ATC assigned altitude.

Change : MAG VAR.

INTENTIONALLY

LEFT

BLANK